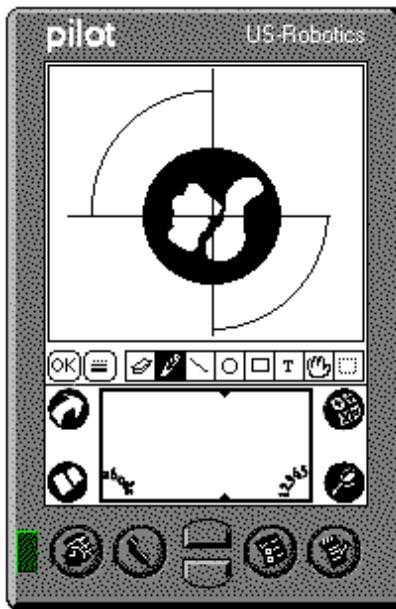


HDSketch Version 1.1

User's Guide



Copyright 1997, Hitchhiker Design.
www.hhd.com

Introduction

Thank you for purchasing HDSketch. We believe that it is the best drawing product available for the Pilot PDA.

We hope that you find HDSketch easy to use. The program's features will likely be familiar to you at first glance. In the interest of saving screen space however, some tools have more than one function. For instance, the line tool toggles, drawing either straight lines, or lines at any angle. For this reason, we recommend that you read through this document to learn about the program's hidden features.

Table of contents

Introduction	1
Installing HDSketch	2
Uninstalling HDSketch	2
REGISTERING	2
Using HDSketch on the Pilot	
The Drawing List Window	3
Tool Settings	4
Drawing Tools	
<i>Eraser</i>	4
<i>Pen</i>	4
<i>Lines</i>	5
<i>Circles</i>	5
<i>Square</i>	5
<i>Text</i>	5
<i>Scrolling</i>	5
<i>Copy and Paste</i>	5
Drawing Settings	
<i>Category</i>	6
<i>Drawing Size</i>	6
Using the Windows conduit	
The Main Window	7
The Details Window	8

Installing HDSketch

System Requirements

- Pilot 1000, 5000, PalmPilot Personal, PalmPilot Professional
- Microsoft Windows 95/ Windows NT

Installation:

1. Download HDSK1.EXE to a temporary folder on your desktop.
2. Once the file has been downloaded, double click the HDSK1.EXE file icon in the temporary folder on your desktop. The file will self extract and produce a number of files including a SETUP.EXE file.
3. Double click on the SETUP.EXE file to start the installation. The installation will automatically place the application files in the root of the Pilot Desktop directory. If the Pilot Desktop application is not installed the installation will fail.
4. The installation will ask you if you would like to install the Pilot side of the application. Answer yes and the Pilot Installation Tool with start. Click install and then exit. The installation will finish.
5. HotSync your Pilot to complete the installation of the Pilot side of the application.

The temporary directory created in the first step can be deleted after the installation has been completed.

Uninstalling HDSketch

From Windows 95 / Windows NT

During setup, an HDSketch program group is created in your Start Menu... Programs menu. Double click the Uninstall icon there to remove all of the HDSketch files from your PC. HDSketch can also be removed in the Control Panel's Add /Remove Programs applet.

From the Pilot

From the applications screen, select Memory, then Delete Apps. Highlight the HDSketch listing, then tap the delete button.

Registering

The HDSketch application is distributed as a fully functional application with a built in 30 day trial period. To continue using HDSketch past this initial trial period you must register.

To Register:

1. Find your user name on your Pilot. This can be found at the top of the screen inside the HotSync applet on your Pilot. This user name is needed to generate a license string.
2. Obtain a license string from Hitchhiker Design:
 - On the web, www.hhd.com
 - By phone, (617) 266-7768
3. Switch to the HDSketch applet on your Pilot.
4. From the Main List Dialog choose the OPTION/REGISTER menu option.
5. Enter the license string in the LICENSE field. Please note this license is CASE SENSITIVE.
6. Click the REGISTER button.
7. Start the HDSketch Windows Application.
8. From the Main Dialog choose the OPTION/REGISTER menu item.
9. Select the user name for your Pilot in the User Name combo box
10. Enter the license string obtained above into the LICENSE field.
11. Click REGISTER.

Please keep you license number in a safe place for future reference.

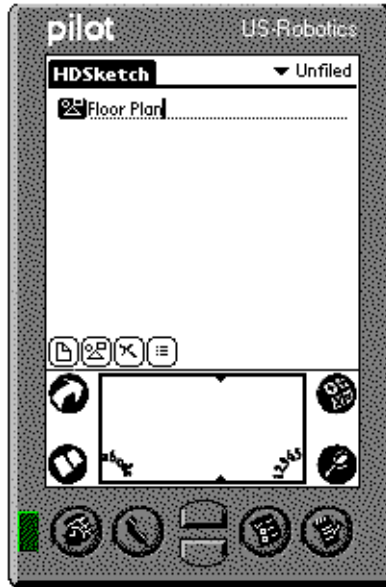
The Drawing List Window

The Drawing List window is the first window that appears when HDSketch is loaded from the Pilot

Applications screen.

This window lists and selects between all of the drawings currently loaded on the Pilot. The total number of drawings is limited to the available memory.

Tip: Because of the large size of some drawings, you will most likely want to make use of the HDSketch Windows Conduit in order to archive drawings not immediately needed on the Pilot. See "Using the Windows Conduit" for details on it's use.



HDSketch allows you to categorize drawings, say for by project or subject. As in other Pilot programs, this is done with the drop-down control in the top right corner of the Drawing List window. By default all drawings are unfiled. You may edit the categories used by selecting "edit categories" in the drop down control. You can create up to fifteen different drawing categories.

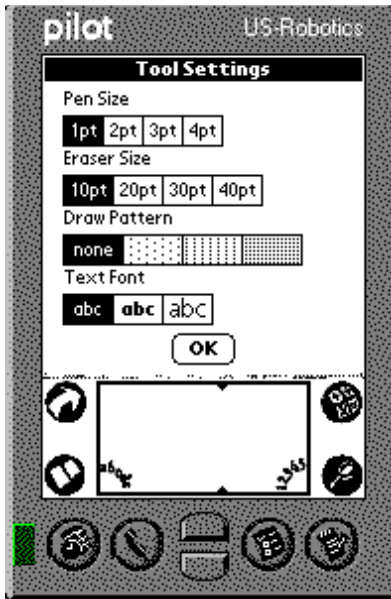
There are four control buttons at the lower left corner of the Drawing List screen. They are:

- | | | | |
|---|-----------------|---|-------------------|
|  | Create Document |  | Edit Document |
|  | Delete Document |  | Document Category |

Create, Edit, and Delete are used to create, edit, and delete the selected document. The Document Category control lets you change the category of the currently selected document.

TIP: Pressing the Pilot's up and down buttons will scroll through the document list. They will also switch between drawings from within the Edit Window.

Tool Settings

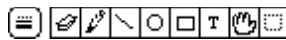


Many of the HDSketch drawing tools are controlled in the tool settings dialog box. It is activated either by tapping the tool settings icon (☰) in the edit window, or by selecting "Options... Tool Settings" from the edit window's menu control.





The Tool Settings dialog box allows you to choose between:

- Pen size - 4 pen widths to choose from. Applies to the pen, line, circle, and square drawing tools
- Eraser size - 4 eraser sizes are available.
- Draw pattern - 4 options, solid and three fill patterns. applies to all of the drawing tools.
- Text Format - Three selections, normal text, bold, and large.


Drawing Tools







Eraser

The eraser tool is selected via the  or  icon on the toolbar. Repeatedly tapping the eraser icon toggles between the eraser's two modes. With the eraser showing as , it erases larger areas, the size of which is chosen in the Tool Settings dialog box. With the eraser visible as , it erases pixel by pixel for detailed work.

Pen

The pen tool is selected by tapping the  icon. It is used to draw free hand in the window space. It's width is selected in the Tool Settings dialog box.

Lines

HDSketch includes a line drawing tool, selected with the  or  icons. Tapping the line tool toggles between it's two modes. The  mode will draw lines by pressing at the beginning point of the line, dragging to the ending point, and lifting the pen. The  mode draws lines that are only horizontal or

vertical.

Circles ○●

The circle tool is selected via the ○● on the toolbar. Circles are drawn by tapping and dragging from the desired center of the circle. The circle is drawn when you lift the pen from the pilot surface. The circle tool has both filled, and outlined drawing modes. Tapping the circle tool toggles between these two modes.

Squares □■

Squares are drawn using the □■ on the toolbar. They are drawn by first pressing the pen down, and lifting the pen after dragging the image of the square. This tool also has two modes for filled and outlined drawing.

Text T

The text tool is activated with the T on the toolbar. A cursor appears where you tap the pen. Text is added using the Pilot text input box. Three font styles, normal, bold, and large, are selected in the Tool Settings dialog box. Once the text has been placed in the drawing, it represented graphically, and is manipulated with the other graphics tools.

Scroll ⤴

The scroll tool is used to move around in drawings that are larger than 160 x 140 pixels. Select the tool from the toolbar. Press and drag the drawing in the direction that you would like to move. (See the **Drawing Settings** section for details on how to select drawing size.)

Copy, Cut, Paste, and the Select Tool ☐

HDSketch supports copy, cut, and paste, both between and within drawings. The select tool chooses the area to be used. The copy, cut, and paste functions are chosen from the Edit menu. Copy copies the drawing area highlighted with the ☐ tool. Cut removes the area from the drawing that has been highlighted with the ☐ tool. Paste pastes a previously cut or copied selection onto the current drawing. (This does not need to be the drawing from which it originated.) Once a selection is pasted you can drag the selected area to it's final position. Releasing the pen completes the paste operation.

Undo

HDSketch includes an Undo command, accessed through the "Edit" menu. This tool can be extremely useful when drawing on the Pilot. HDSketch saves your actions between tool selections.

TIP: Briefly tapping a tool other than the one that you are currently using removes previous actions from the Undo buffer. This is helpful in that it prevents your undoing all of your work should you make a mistake later on.


Drawing Settings



The drawing settings dialog box lets you choose both the drawing size, and the category in which to file the drawing. It is accessed through the edit window's Options... Drawing Settings menu control. **TIP:** /D in the Pilot text entry box will load this dialog box.

You have the choice of 4 drawing sizes, and 15 user defined categories. The drawing sizes are:

- 160pixels x 140 pixels
- 320pixels x 280 pixels
- 480pixels x 420 pixels
- 512pixels x 496 pixels

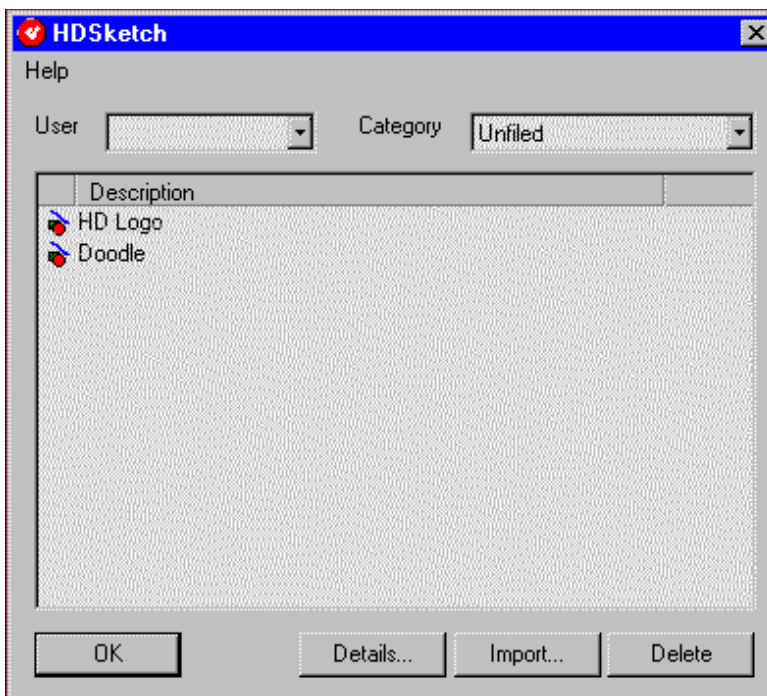
The Pilot screen has a resolution of 160 x 160 pixels. Drawings larger than this (the later 3 selections) require using the scrolling tool  to move around in them.

Using the HDSketch Windows Conduit (Microsoft Windows users only.)

The HDSketch software includes a Windows Conduit that is run from within the Pilot Desktop application. Using this conduit, you can transfer images to, and from your Pilot. After installing HDSketch, the red hdsketch icon is installed within the Pilot Desktop.

To start the application, click the  icon. The HDSketch conduit window will then appear.

The Drawing List Window



The conduit application lists drawings that are currently on your PC, and on the pilot. Every time you HotSync your pilot, the conduit copies your drawings to and from the pilot so that your computer and Pilot contain the same drawings

The Categories drop-down control lets you select between the drawings, as categorized in HDSketch on your Pilot. The User drop-down control allows you to select between the different users who HotSync their Pilot's with your PC.

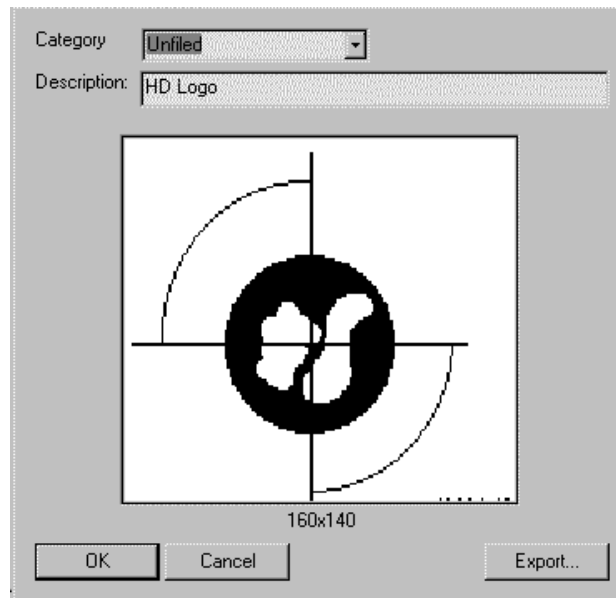
Tip: When deleting a drawing on either the PC or Pilot, remember to delete the drawing both on the Pilot and the PC. If you delete it only on one, it will be restored to the other during the next hot-sync.

Using the conduit is much like using the List window in HDSketch on the Pilot. You can import drawings into the Pilot by clicking the "Import" button in the Drawing List window. This loads the common Windows Open dialog box. You can then select from Windows Bitmap (.bmp) files on your computer

to import. **Note:** Drawings must be monochrome (2 colors) in order to be imported into the conduit. Windows Paintbrush, and many other PC drawing software packages are capable of reducing the number of colors in images that you may have.

The Details dialog box.

To view, rename, export, or change the category of a drawing, you can either double click the drawing in the list, or single click the drawing and click "**Details...**" Either method will bring up the Details dialog shown below.



The "Category" drop down control allows you to change the drawing's category. The categories available are defined in HDSketch on the Pilot.

The drawing's description can be modified in the Details window "Description" field. Changing the description of a graphic will cause it to be treated as a new graphic during the next hot-sync.

The "Export" button will bring up the standard Windows "Save As.." Dialog box. From this you can save your drawing as a Windows bitmap (.bmp) file.

Clicking "OK" closes the Details dialog, and returns you to the conduit's main window.

Copyright 1997, Hitchhiker Design.

Pilot is a trademark of U.S. Robotics Corporation.

Windows 95 is a trademarks of Microsoft Corporation.